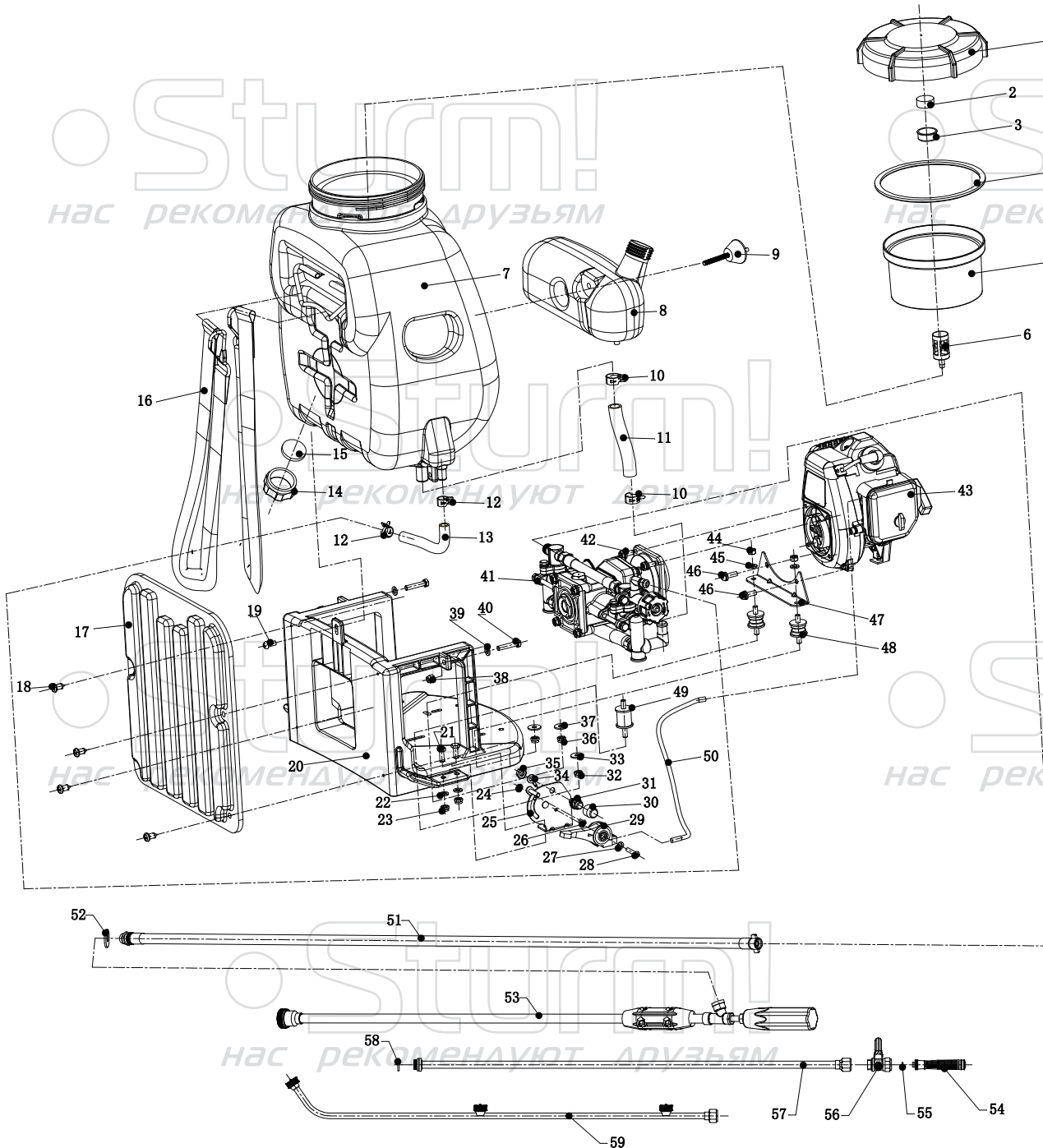


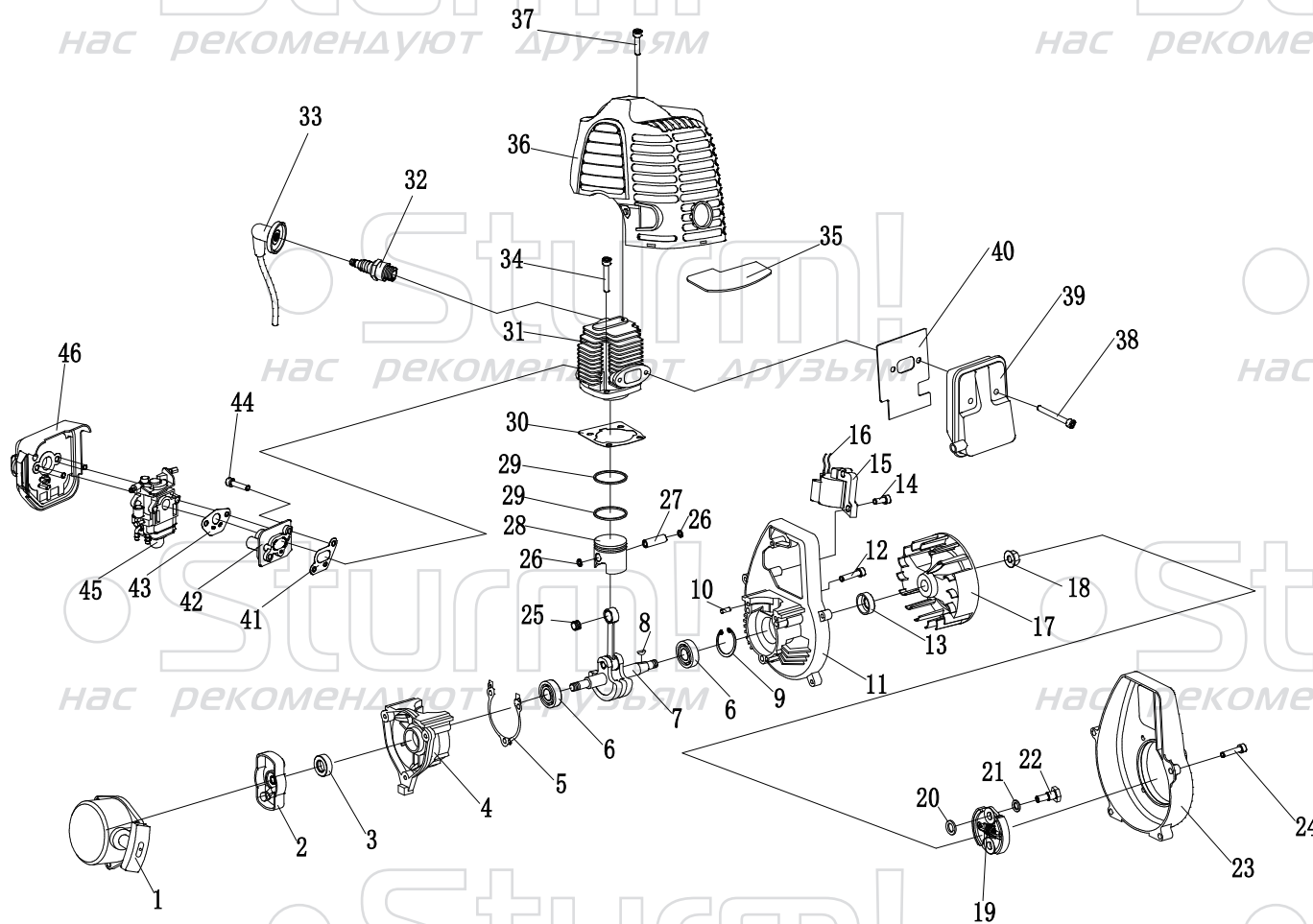
GS8215G



NO.	DESCRIPTION	NO.	DESCRIPTION
1	CONTAINER COVER	31	ENGINE STOP SWITCH
2	SPONG	32	NUT M6
3	INLET VALVE	33	WASHER Ф6
4	GASKET	34	LINE
5	FILTER	35	NUT M8
6	OUTLET FILTER	36	NUT M6
7	TANK	37	WASHER Ф6
8	OILCAN	38	NUT M6
9	OILCAN SCREW	39	WASHER Ф6
10	CLIP Ф18	40	SCREW M6*30
11	SUCTION PIPE	41	PUMP
12	CLIP Ф13	42	SCREW CMOP
13	OVERFLOW PIPE	43	ENGINE
14	DRAIN CAP	44	NUT M6
15	GASKET	45	WASHER Ф6
16	STRAP	46	SCREW CMOP
17	PAD	47	ENGINE STAND
18	SCREW ST6.3*16	48	JOINT (ENGINE)
19	SCREW M6*12	49	JOINT (PUMP)
20	FRAME	50	CABLE
21	SCREW M6*12	51	OUTLET HOSE 1.5M
22	WASHER Ф6	52	GASKET FOR SPRAYER ROD
23	NUT M6	53	90CM STRAIGHT GUN
24	NUT M5	54	HANDLE
25	CABLE COMP FRAME	55	SEALING WASHER
26	SCREW M5*8	56	SWITCH
27	WASHER Ф5	57	STRAIGHT ROD
28	SCREW M5*28	58	SEALING WASHER
29	FLEX ACCELERATOR	59	THREE HOLE SPRAY GUN
30	STOP SWITCH CAP		

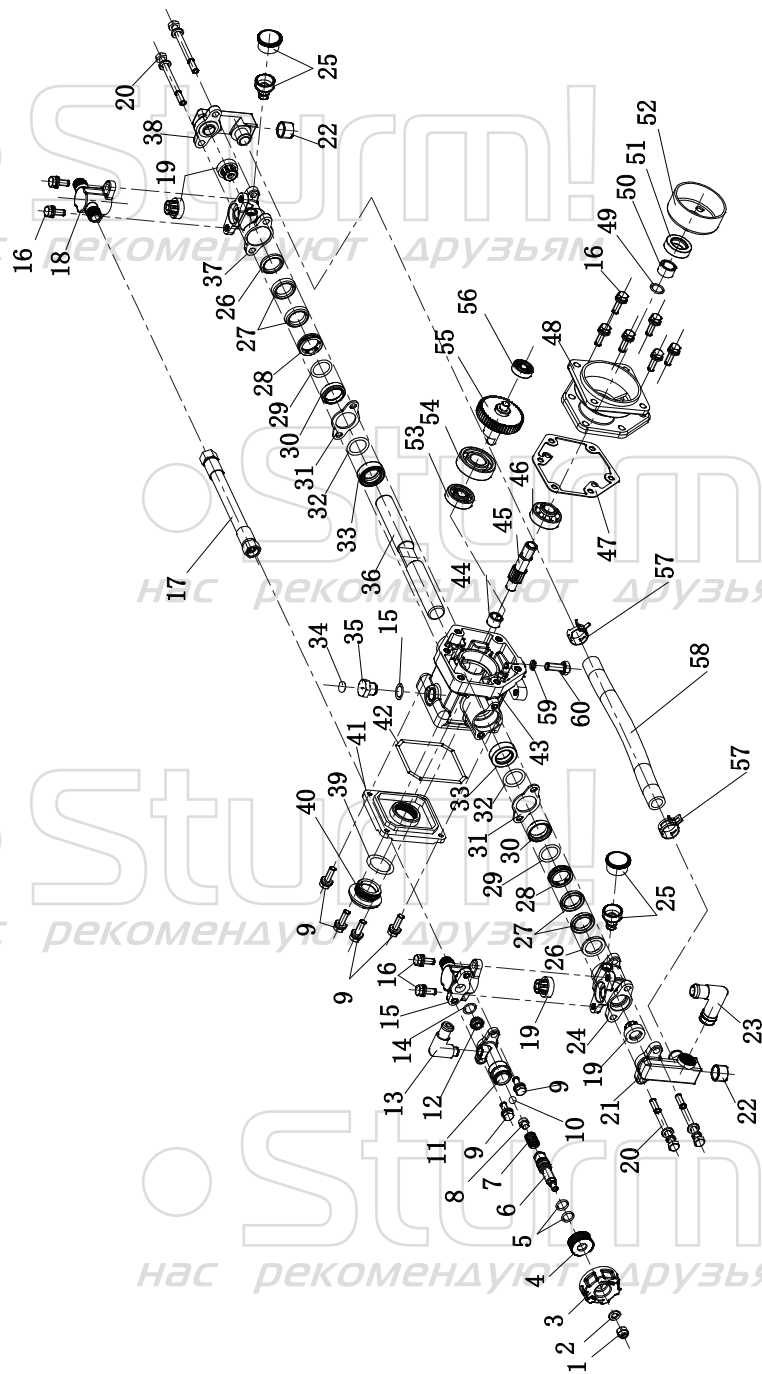
GS8215G-EX-RUS20221027

ENGINE FOR GS8215G



NO.	DESCRIPTION	NO.	DESCRIPTION
1	STARTER	26	PISTON PIN RING
2	DRIVE PLATE	27	PISTON PIN
3	OIL SEAL $\Phi 12 \times \Phi 22 \times 7$	28	PISTON
4	CRANK CASE	29	PISTON RING
5	CRANK CASE GASKET	30	CYLINDER GASKET
6	BEARING 6001	31	CYLINDER
7	CRANK SHAFT	32	SPARK PLUG
8	WOODRUFF KEY 3*12	33	IGNITION CAP ASSEMBLY
9	CIRCLIP $\Phi 30$	34	BOLT M5X16
10	PIN $\Phi 3 \times 8$	35	BAFFLE PLATE
11	CRANK CASE	36	ENGINE COVER
12	BOLT M5X25	37	BOLT M5X16
13	OIL SEAL $\Phi 12 \times \Phi 30 \times 7$	38	BOLT M5X45
14	BOLT M5X20	39	MUFFLER
15	IGNITION	40	MUFFLER GASKET
16	WIRE	41	GASKET
17	FLY WHEEL	42	CARBURETOR BASE
18	NUT M8	43	CARBURETOR GASKET
19	CLUTCH	44	BOLT M5X20
20	WASHER $\Phi 6$	45	CARBURETOR
21	WAVE WASHER $\Phi 8$	46	AIR FILTER ASSEMBLY
22	STEPPED SCREW		
23	SIDE COVER		
24	BOLT M5X20		
25	NEEDLE BEARING HK0811		

GS8215G-EX-RUS20221027



PUMP FOR GS8215G

NO.	DESCRIPTION	NO.	DESCRIPTION
1	NUT M6	31	FIXED SEAT
2	WASHER $\phi 6$	32	O-RING
3	PRESSURE ADJUSTING WHEEL	33	OIL SEAL
4	PRESSURE ADJUSTING NUT	34	PASTER
5	O-RING	35	BLOT
6	PRESSURE VALUE SHAFT	36	PLUNGER
7	SPRING	37	CYLLINDER DOUBLE HOLE
8	VALVA ROD	38	SUTION PIPE
9	BOLT M6X14	39	O-RING
10	VALVE BALL	40	OIL GLASS
11	PRESSURE VALUE CASE	41	CRANK CASE COVER
12	VALVE SEAT	42	O-RING
13	PIPE	43	CRANK CASE
14	O-RING	44	NEEDLE BEARING HK1010
15	OUTLET CHAMBER	45	GEAR SHAFT
16	BOLT M6X16	46	BEARING 6201
17	OUTLET PRESSURE HOSE	47	GASKET
18	OUTLET CHAMBER DOUBLE HOLE	48	DRUM CASE
19	VALVE ASS'Y	49	O-RING
20	BOLT M6X70	50	PIPE
21	SUTION PIPE DOUBLE HOLE	51	OIL SEAL
22	NUT	52	CLUTCH DRUM
23	SUCTION PIPE	53	BEARING 6200
24	CYLLINDER	54	BEARING 6203
25	CREASE SEAT	55	GEAR
26	PARKING SEAT	56	BEARING 608
27	V-PARKING	57	CLIP
28	CREASE SEAT	58	HOSE
29	CREASE PACKING	59	O-RING
30	ADJUSTING RING	60	BOLT M6X10

GS8215G-EX-RUS20221027

Sturm!
нас рекомендуют друзья